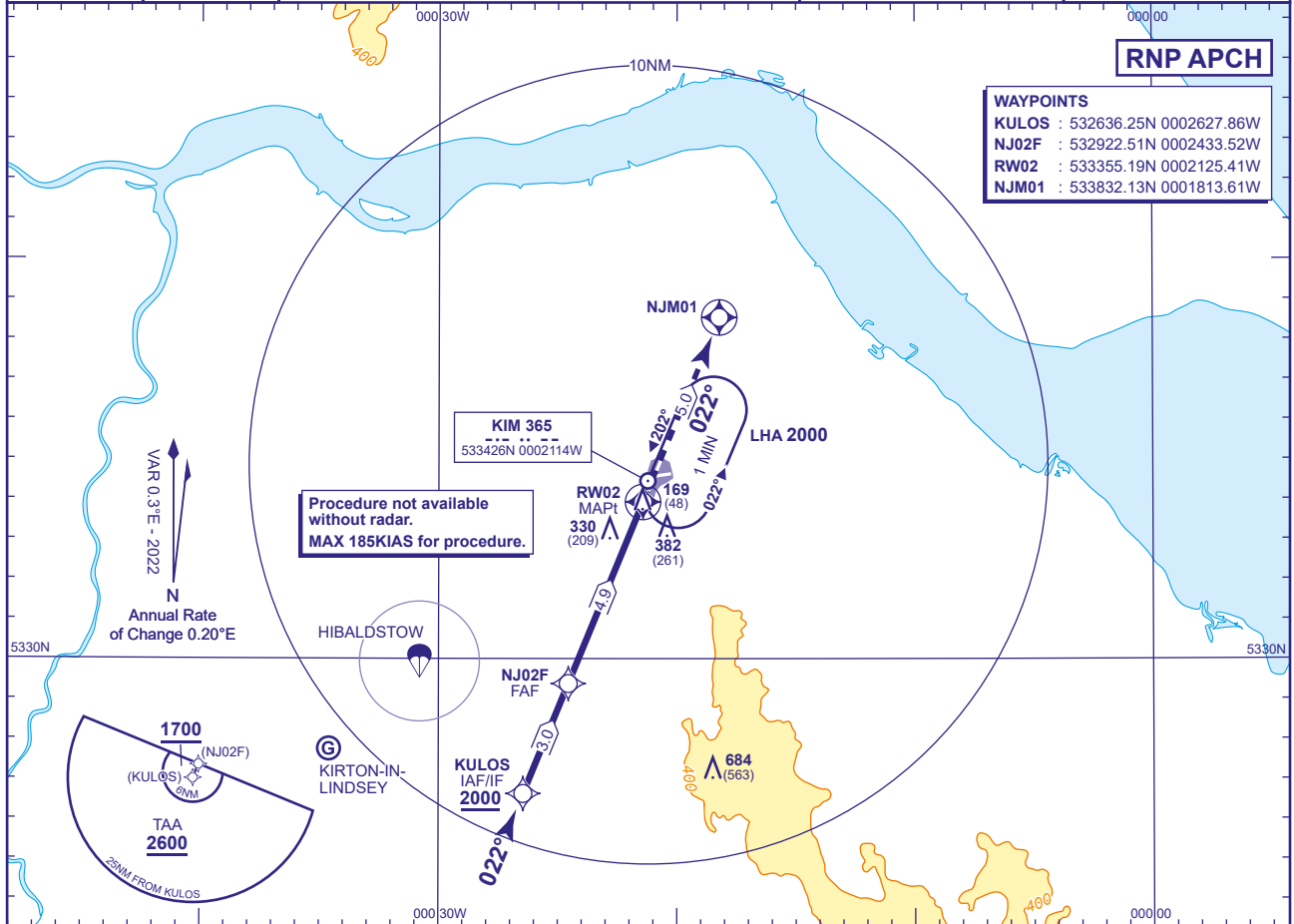
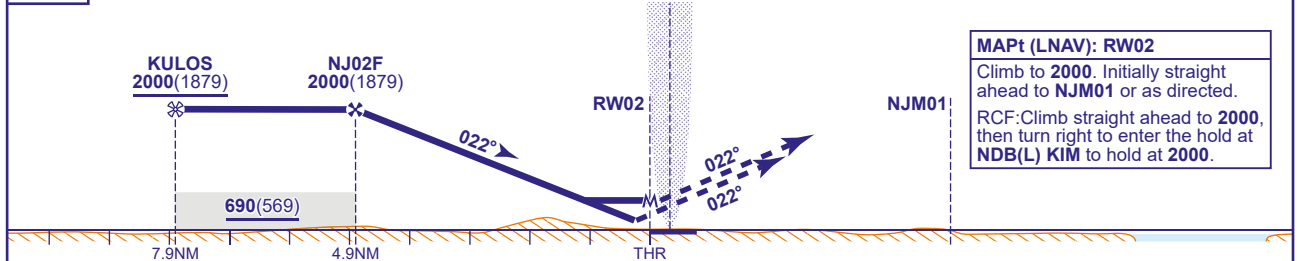


**HUMBERSIDE
RNP
RWY 02
(ACFT CAT A,B,C,D)**

<div><div>2₆</div><div>MSA 25NM ARP</div></div>	<div><div>1₈</div><div>MSA 10NM ARP</div></div>	APP 119.130	HUMBERSIDE APPROACH	AD ELEVATION 121	<div><div>RNP</div><div>RWY 02</div><div>(ACFT CAT A,B,C,D)</div></div>
		TWR 124.905, 119.130	HUMBERSIDE TOWER	THR ELEVATION 121	
		RAD 119.130, 129.255	HUMBERSIDE RADAR	OBSTACLE ELEVATION	
		ATIS 124.130	HUMBERSIDE INFORMATION	684 AMSL (563) (ABOVE THR)	
					BEARINGS ARE MAGNETIC
					TRANSITION ALTITUDE 3000



RECOMMENDED PROFILE Gradient 6.12%, 372FT/NM			
NM to RW02	4	3	2
ALT(HGT)	1660(1539)	1290(1169)	920(799)
TCH 50	NDB(L) KIM		Arrival and immediate Approach as directed by radar.



Aircraft Category		A	B	C	D	Rate of descent	G/S KT	160	140	120	100	80
OCA (OCH)	LNAV/VNAV	470(349)	490(369)	500(379)	510(389)		FT/MIN	900	870	740	620	500
	LNAV	580(459)	580(459)	580(459)	580(459)							
VM(C)OCA (OCH AAL)	Total Area	690(569)	690(569)	990(869)	1050(929)							

NOTE 1 LNAV/VNAV temperature at which VPA exceeds 3.5° is 14.7°C.

CHANGE (5/24): OCA(OCH) CAT B/C/D. VM(C)(OCH AAL) CAT A/B. MOCA INCREASED. TAA KULOS SUBSECTOR AMENDED TO 6NM. NOTE ADDED.